

Garden Homes 5/28/25 NTMP Meeting Notes

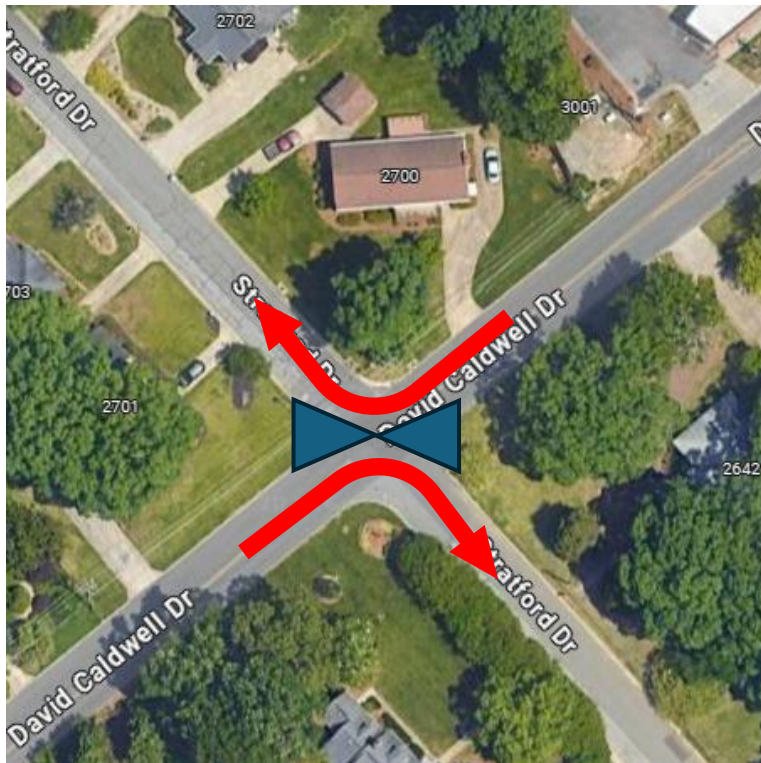
- Reviewed / Ranked Options Presented by NTMP
- Next Steps
 - Emergency response review of options to determine potential response time impacts
 - Implementation (can be soon, do not need to wait for any particular period)
 - Post-Implementation Review of Traffic Impact (a week or two after)
- Sidewalks
 - Not handled as part of NTMP (but may be in the future)
 - David at NTMP will provide information on how to solicit sidewalks via petition
- Enforcement
 - Discussed need for enforcement
 - Was suggested to utilize 373-SLOW reporting number and Community Resource Officer for direct contact (David at NTMP will provide contact info for our Community Resource Officer)

Ranked Options

- **Rank #1** Restrict southbound traffic on David Caldwell at Stratford
 - **1a)** Diagonal Diverter forcing southbound traffic on David Caldwell north on Stratford or...
 - **1b)** Half-closure on David Caldwell to Southbound traffic near Stratford
- **Rank #2** Mini-Roundabout at Shady Lawn
- **Rank #3** Pavement Markings on David Caldwell
- **Rank #4** Right In / Right Out only at Robin Hood & Holden
- **Not selected** Half closure to southbound traffic on Robin Hood at David Caldwell (anticipated minimal benefit)

Rank #1 Restrict southbound traffic on David Caldwell at Stratford

Rank 1a
Diagonal Diverter



Rank 1b
Half Closure



If Emergency Response Review looks unfavorable for 1a, shift to 1b

Rank #2 Mini-Roundabout at Shady Lawn

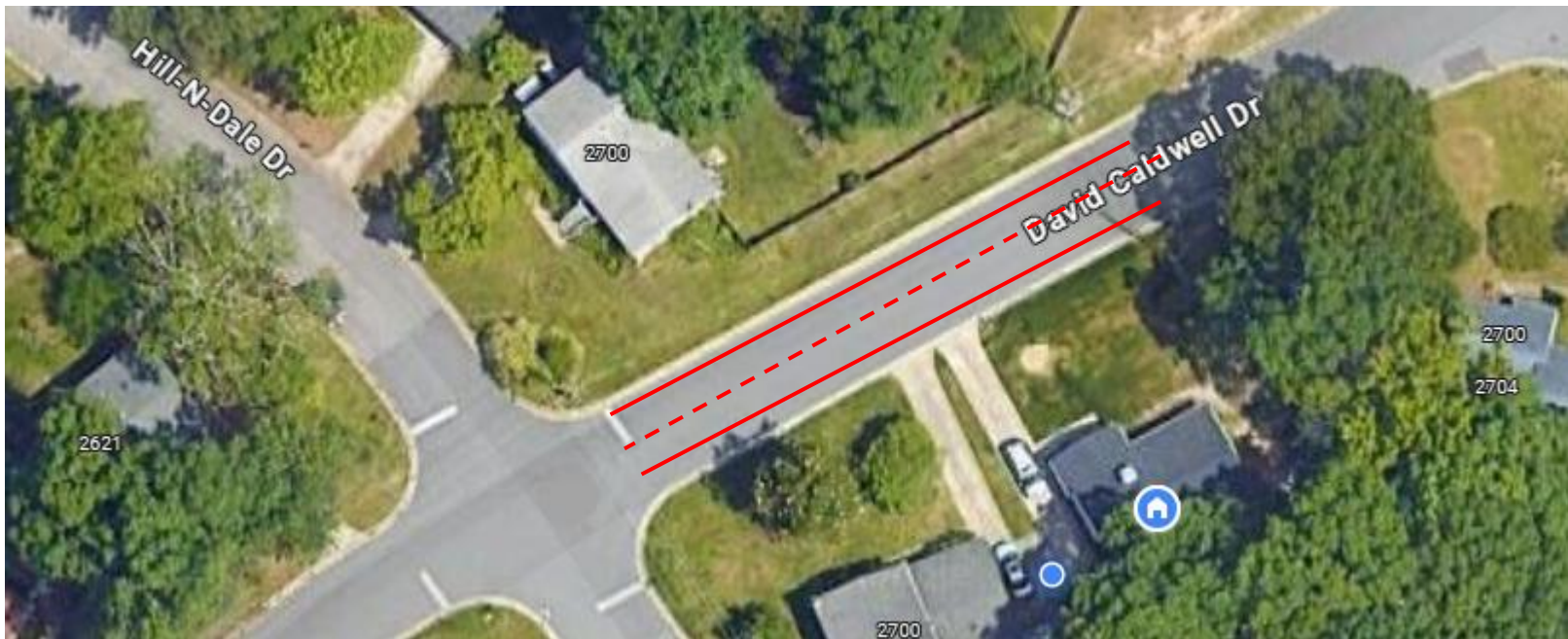
Painted Only (permanent structure might have slight raise)



Rank #3 Pavement Markings on David Caldwell

Dependent on street size

Could be center line only, or center line and walking lines



Rank #4 Right In / Right Out only at Robin Hood & Holden

Similar to David Caldwell at Holden
Could be implemented at Shady Lawn & Hill N Dale as well,
but Robin Hood has most traffic of those 3



Other Notes

- Diagonal Diverters, Partial Road Closures, Mini Roundabouts – these are all **temporary** (at least initially) so they can be undone
- Chicanes are not an option given the frequency of drive-ways / intersections
- Only one mini roundabout is an option given distance requirements between them
- A 25 MPH sign is on Work Order to be installed on Hill N Dale (without a posted sign, the 35 MPH default speed is in effect)